

COLORADO WATER PLAN

COLLABORATIVE WATER MANAGEMENT

The Colorado Water Plan is built on decades of evolving water policy and collaboration. Our water challenges demand united focus and innovation. The institutional system governing how much water Colorado can use and consume within its boundaries is based on nine interstate compacts, two equitable apportionment decrees, and Colorado water law (called prior appropriation). State and local governments also govern water use and management with regulations, ordinances, and codes. These governing systems working together have allowed Colorado's water users and stakeholders to develop strong relationships across regional divides.

COLORADO WATER VALUES

The spirit of collaboration that underscores our four core values, will be more critical than ever to achieve the collective vision for Colorado's water future. These values include: 1) A productive economy that supports vibrant and sustainable cities, agriculture, recreation and tourism; 2) An efficient and effective water infrastructure system; 3) A strong environment with healthy watersheds, rivers, streams and wildlife; 4) An informed public with creative, forward-thinking solutions that are sustainable and resilient to changing conditions and result in strong, equitable communities that can adapt and thrive in the face of adversity.

The 2023 Water Plan organizes the values above into four action areas that connect to cities, farms, streams and people. These action areas organize the plan and direct readers to different water uses and planning needs. However, the four action areas are integrated, interdependent, and need equal support.

VIBRANT Communities

counties, municipalities, utilities, cities, towns, businesses, large industries, large/ small urban and rural communities, etc.

ROBUST Agriculture

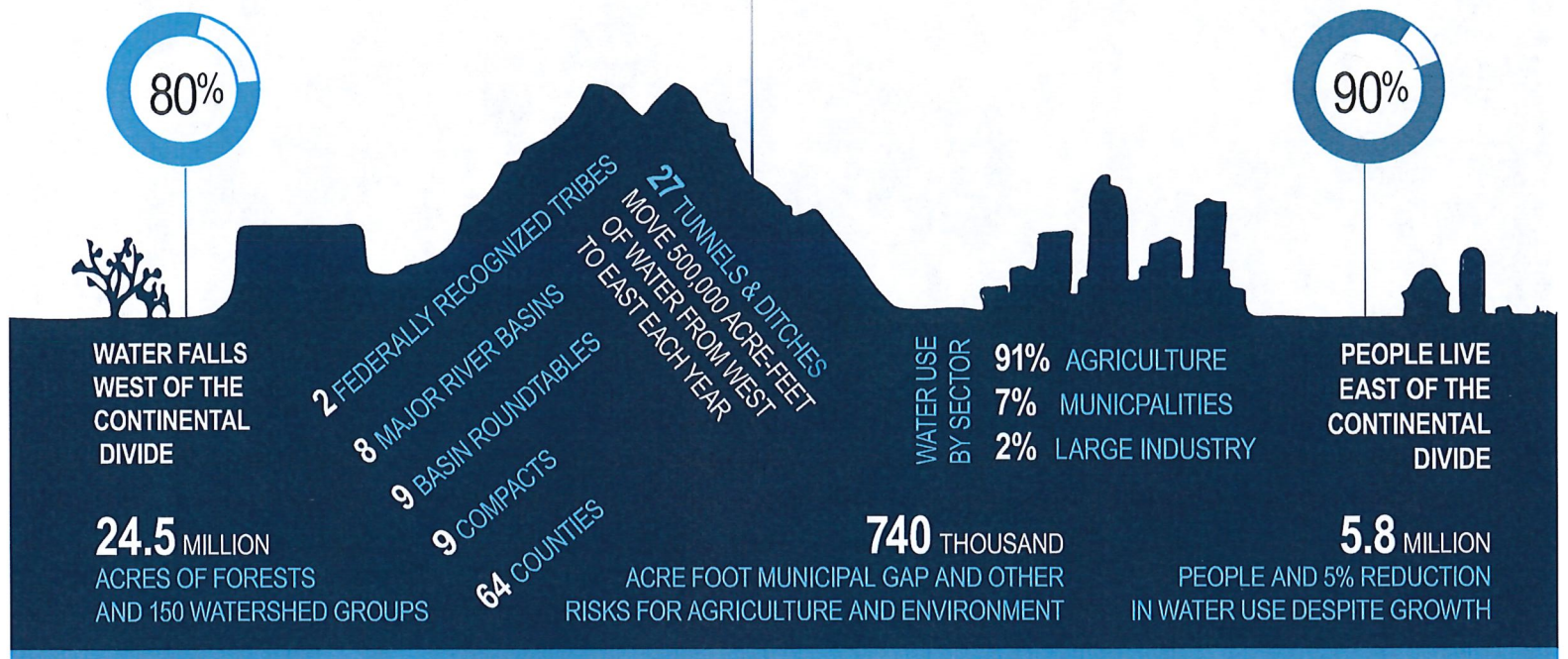
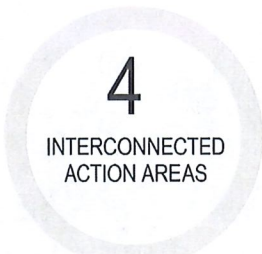
established crops and farms, local food, orchards, ranching, ditch companies, acequias, urban agriculture, etc.

THRIVING Watersheds

environment and recreation, river health, watershed health, forest health, wildfire mitigation, wildlife and aquatic species protection, etc.

RESILIENT Planning

climate adaptation, planning for climate extremes, embracing equity, diversity, and inclusivity, education, outreach and engagement, supportive government, etc.



To learn more, visit engagecwb.org



COLORADO
Colorado Water Conservation Board
Department of Natural Resources

THE WATER PLAN IS A BRIDGE TO ACTION

Meeting Colorado’s water challenges will take the whole state pulling together, with stakeholders working at the local level on projects and the Colorado Water Conservation Board (CWCB) providing support through tools and grant funding through the Colorado Water Plan Grant Program. Actions in the Water Plan are divided between partner and agency actions as explained below.

50 While the list of partner actions is limitless, the Water Plan describes about 50 project ideas that could be supported by Water Plan grants.

- PARTNER ACTIONS**
- Increased personal conservation
 - Starting a new water initiative/project
 - Developing collaborative solutions

50 The Water Plan lists 50 actions CWCB and collaborating agencies will take to support local projects, conservation and wise-water development.

- AGENCY ACTIONS**
- Developing frameworks and convening groups
 - Advancing research and science
 - Creating support tools

WATER PLAN GRANTS HELP FUND PROJECTS

The legislature created the Water Plan Grant Program categories for CWCB to fund local multi-beneficial water projects.



Agriculture



Conservation & Land Use



Engagement & Innovation



Watershed Health & Recreation



Water Storage & Supply

COLORADO WATER PLAN TIMELINE

2015

Inaugural Water Plan Released

2017

Technical Advisory Groups Convened

2019

Basin Planning Group Convened

Technical Update Completed

2021

Project Database Developed

Water Plan Scoping Workshops

2022

Basin Plans Completed

Water Equity Task Force Concludes

Water Plan Draft Released for Comment

2023

Final Draft to CWCB Board

COMMENT. COMMIT. SHARE.

Visit engagecwcb.org to read the plan and share your comments or provide input at one of four online listening sessions from 4 :00 - 6:00 p.m. on the following dates:

- July 27
- August 10
- September 1
- September 28

Commit to taking action to build a more water-secure future by submitting your idea for how to save water. Share a story of a water project that’s helping make Colorado more resilient to its water challenges. The top stories shared may be featured on CWCB’s website along with the final Water Plan!



COLORADO

Colorado Water Conservation Board

Department of Natural Resources



80 YEARS

OF LOCAL SOIL & WATER
CONSERVATION

KRISTEN ROCKFORD, ACTING DISTRICT MANAGER

Routt County Conservation District • www.routtcountycd.com





3

Courtesy of Library of Congress, Ward, J.H., "Dust storm. Baca County, Colorado," 1935

"The nation that destroys its
soil destroys itself."

PRESIDENT FRANKLIN D. ROOSEVELT, 1937

- Consider the land's relationship to the entire farm, ranch, or watershed
 - Consider the needs and capabilities of each acre within the plan
 - Consider the farmer's facilities, machinery, and economic situation
 - Incorporate the farmer's willingness to try new practices
 - Ensure the conservationist's presence out on the land
- ~ Hugh Hammond Bennet, 1947



Welcome to the
NRCS Field Office Technical Guide

Colorado (CO)



About FOTG

Technical guides are the primary scientific references for NRCS. They contain technical information about the conservation of soil, water, air, and related plant and animal resources.

Technical guides used in each field office are localized so that they apply specifically to the geographic area for which they are prepared. These documents are referred to as Field Office Technical Guides (FOTGs).

Appropriate parts of the Field Office Technical Guides are automated as databases, computer programs, and other electronic-based materials such as those included in these web based pages.

<http://efotg.sc.egov.usda.gov/#/>

FOTG Sections

Section 1 - General Resource References

- General state maps.
- Descriptions of Major Land Resource Areas, watershed information, and links to NRCS reference manuals and handbooks.
- Links to researchers, universities, and agencies we work with.
- Conservation practice costs and agricultural laws and regulations.

Section 2 - Natural and Cultural Resources Information

- Detailed information about soil, water, air, plant, and animal resources.
- Cultural resources and information about protected plant and animal species.
- NRCS Soil Surveys, Hydric Soils Interpretations, Ecological Site Descriptions, Forage Suitability Groups, Cropland Production Tables, Wildlife Habitat Evaluation Guides, Water Quality Guides, and other related information can be found here as it

Section 3 - Resource Concerns and Planning Criteria

- NRCS Quality Criteria, which establish standards for resource conditions to provide sustained use.

Section 4 - Practice Standards and Supporting Documents

- NRCS Conservation Practice Standards that define the practice and where the practice specifications are detailed requirements for installing the practice in the state.

Section 5 - Conservation Effects

- Background information on how Conservation Practices affect each identified resource concerns in the state.

WHAT IS A
FOTG?

NRCS Technical Guides → Conservation Practices tailored to build soil health & resiliency to drought & wildfire → organize by land use → design & mail the booklet



A Few Key Points

- Collaborative Conservation
- Compliments ongoing efforts
- RCCD has “skin in the game” with a match
- Next step – seek funding to implement projects

THANK YOU!

ROUTT COUNTY CONSERVATION DISTRICT

routtcountycd.com

SOIL HEALTH

routtcountycd.com/soil-health

EQUIPMENT RENTAL

routtcountycd.com/equipment-rental/



1475 Pine Grove Road, Ste 201A • Steamboat Springs, Colorado

970-439-3243 • information@routtcountycd.com



Upper Yampa River Watershed Group

UYWCD Board member report 7/20/22

Upper Yampa Watershed Group (WG): L. Halliday, Watershed Coordinator

- I. Met on July 6, good turnout, WG back to monthly meeting schedule every 1st Wednesday**
- II. Update by Halliday on Watershed Health Project: Protecting Water Quality in the Sub-basin Above and Including Stagecoach Reservoir (next steps following completion of Nutrient and Sediment Loading Analysis by USGS driven by prolific algae blooms including toxic cyanobacteria); Soliciting members for stakeholder sub-group**
- III. Presentation by Woodmansee, introduction to educational/training module series on nutrient cycles, systems, etc.**
- IV. Presentation by USGS relative to algae projects in White River Basin and other parts of Colorado; water quality sampling overview.**
- V. NASA intern DEVELOP program**
 - a. Remote sensing/satellite imagery to be correlated with chlorophyll a sampling data – Stagecoach res, Steamboat Lake, Dumont Lake, others**
 - b. 3 cameras set up at SCR**
- VI. Coordinating with other ongoing projects:**
 - a. Edge of field – CO Ag Water Alliance**
 - b. STAR – Legacy Ranch: soil moisture probe demos; water quality apparatus in field (Ag Water Alliance – Cattlemen’s/CSU); BMP demo project**
 - c. IWMP listed project - reference differences between UYWG and IWMP**
- VII. Next steps**
 - a. Continue grant acquisitions**
 - b. Regular stakeholder meetings to help steer work and outcomes**
 - c. ID Sources and Stressors:**
 - i. GIS land use inventory**
 - ii. RFP: Water quality sampling and analysis program, tributary and in-lake**
 - iii. Nutrient modeling**
 - iv. Remote sensing**
 - d. Mitigation strategies**
 - e. Demonstration projects**
 - f. Multi-year project**

Differences Between IWMP and Watershed Management Plan in the Upper Yampa River Basin

	Watershed Management Plan	Integrated Water Management Plan (IWMP)
What is it?	Holistic, systems management & protection of watershed health addressing water quality & specifically non-point sources of potential pollution	Primary focus on water supply challenges: water use, flows, diversion infrastructure, & river morphology of certain river segments
Mission	The Upper Yampa River Watershed Group is committed to maintaining and improving the chemical, physical and biological health of the upper Yampa River and its tributaries through the creation and implementation of a non-regulatory Plan that informs decision-making and increases local capacity to protect and enhance water quality, promote water conservation, and sustain the health of the Watershed.	IWMP scope of work provides a roadmap to collaboratively identify & support actions that help implement the basin (BIP) goals.
Enabling legislation	1972 Federal Clean Water Act, Section 208; Colorado Water Quality Control Act – Non Point Source Program	Colorado State Legislature – 9 Basin Roundtables; Colorado Water Plan 2015; Basin Implementation Plan (BIP)
Lead Agency	Upper Yampa River Watershed Group (UYWG) formed in 2013	Yampa White Green Roundtable (BRT), IWMP Committee formed in 2019
Committee members	Original 2013 Technical Committee attached; diverse local citizenry - open to all	Original 20 member IWMP Committee members attached - (half of these were from UYWG) appointed by the BRT Jan. 2019
History	Started with development of 1996 208 Water Quality Management Plan (updated in 2002)	CWCB guidance & funding to all 9 Basin Roundtables; Yampa IWMP Committee formed in 2019
Planning Area	Upper Basin from headwaters to confluence with Elkhead Creek including the Yampa River main stem & all tributaries & land and land uses that feed the tributaries	Upper & Lower Basins of the Yampa River, mostly addresses the main stem of the Upper & Lower Yampa River main stem and the Elk River
Products	GIS mapping series; 2014 State of the Watershed Report; 2016 Upper Yampa River Watershed Plan; 5 sub-basin assessments; Identification of stressors, impacts, & solutions for watershed protection	Remote Environmental Assessment (broad scale main stem only); Middle Stem Fluvial Hazard Mapping; Middle Stem Riparian Condition Scoring; Recommended 19 project list to BRT
Projects	Water Quality Assessment for Upper Yampa River Watershed 1975 through 2009 (USGS); Assessment of Streamflow & Water Quality in the Upper Yampa River Basin 1992-2018 (Nutrient & Sediment Loading Analysis) USGS	Ag Diversion Structure Inventory, Outreach & Survey
Regulatory?	no	no